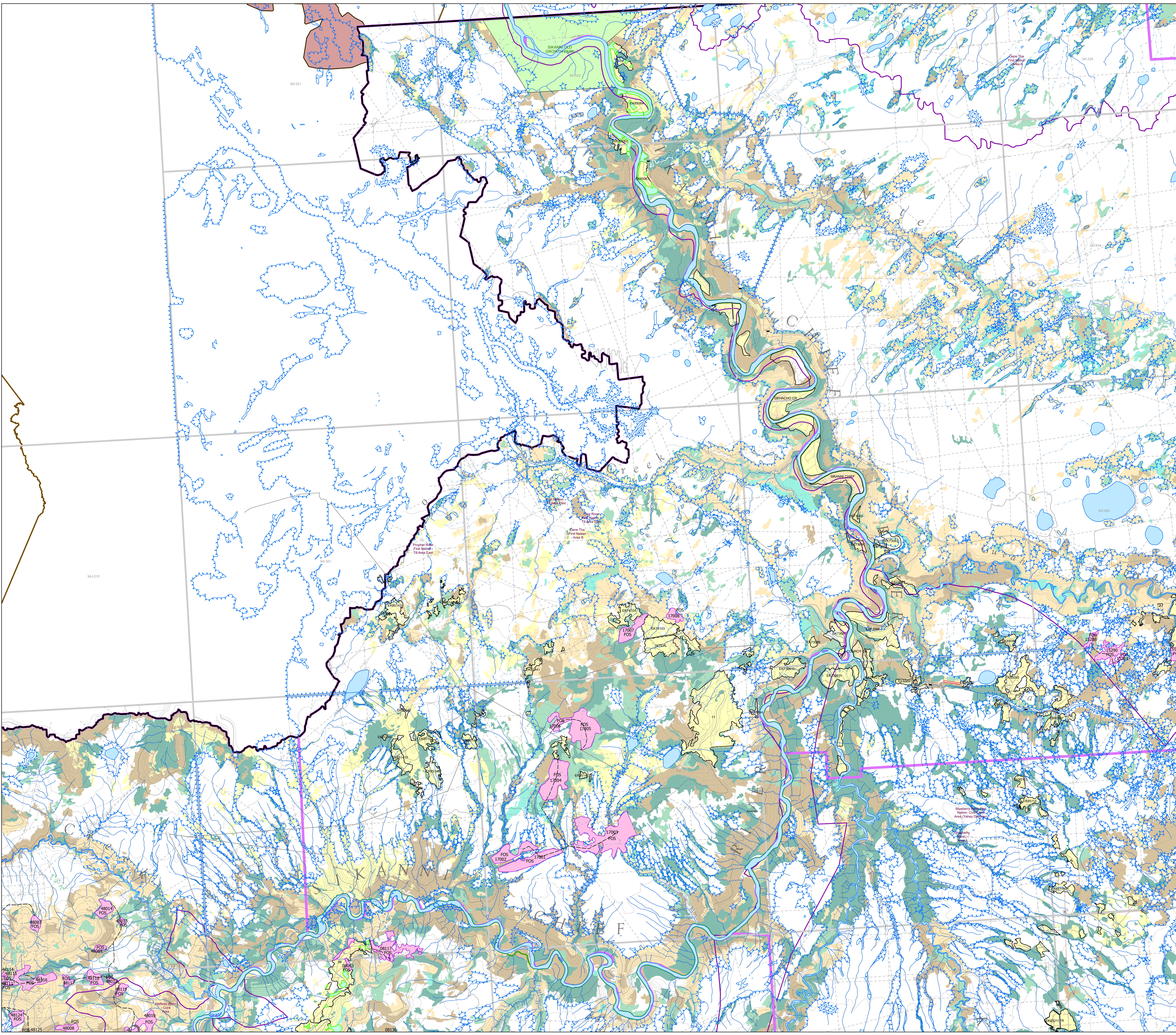
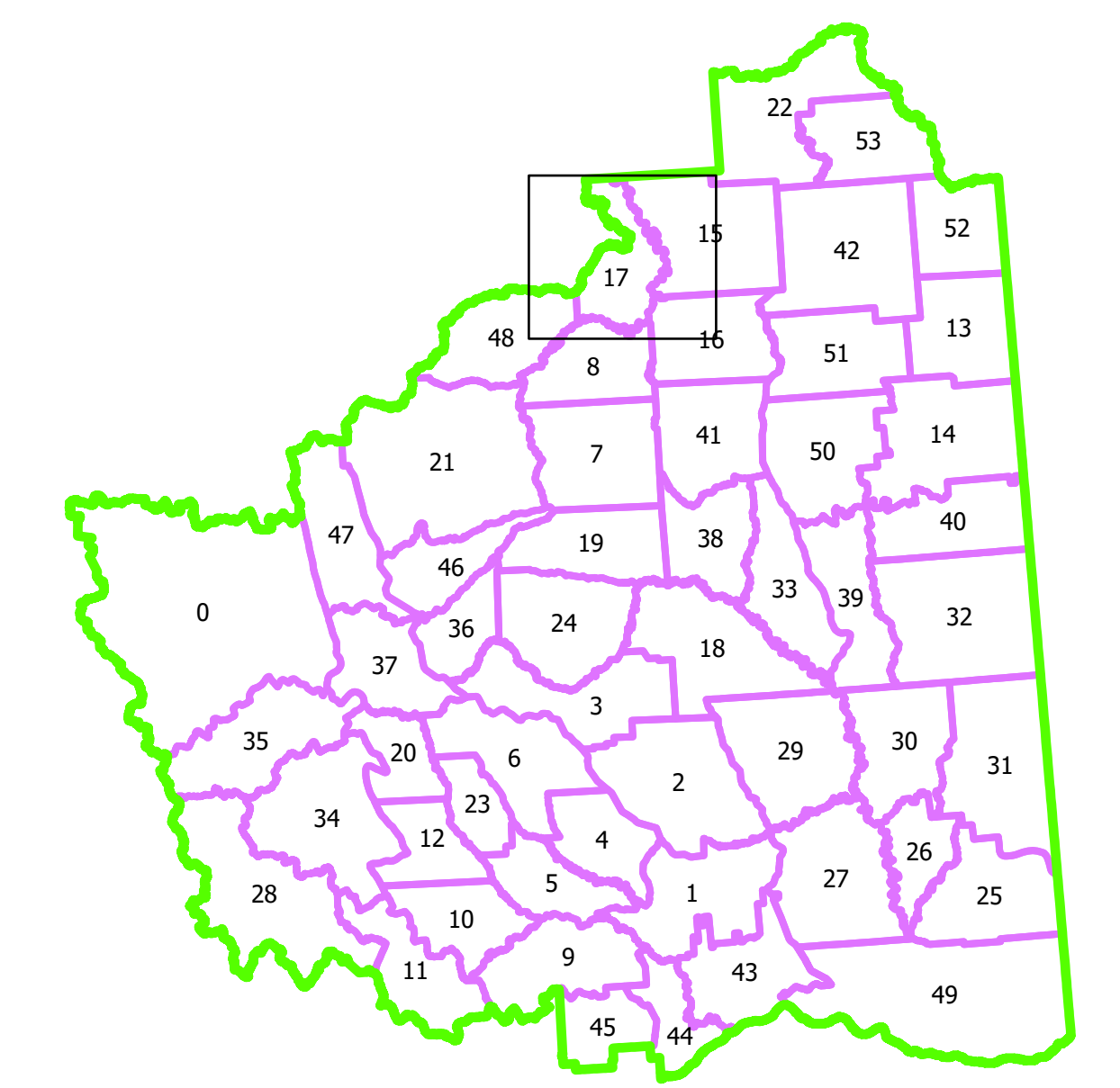


**2025 - 2053 CONSOLIDATED
 FOREST OPERATIONS SCHEDULE**
 Current date to January 02, 2024
**FORT ST. JOHN TIMBER SUPPLY AREA
 PEACE FOREST DISTRICT**

BC Timber Sales
 Cameron River Logistics Inc.
 Canadian Forest Products Ltd.
 Dunne-Za Ventures LP
 Louisiana-Pacific Canada
 Mackenzie Pulp Mill Corporation a Paper Excellence Company
 Peace Valley OSB

**Operating Area:
 #17 - Dehacho Creek**



Cutblocks

- Wildlife Tree Patch / Reserve
- LOGGED
- NEW
- PERMITTED
- FOS PLANNED
- FSJ Openings

Ownership Codes

- BCT: BCTS (conifer)
- BCD: BCTS (deciduous)
- BCS: BCTS (conifer or deciduous)
- Cc: Canfor (conifer)
- Cd: Canfor (deciduous)
- CFP: Canfor (conifer or deciduous)
- CRL: Cameron River Logging
- DZ: Dunne-Za / Canfor
- LP: Louisiana-Pacific Canada
- MPMC: Mackenzie Pulp Mill Corporation a Paper Excellence Company
- PV: Peace Valley OSB

Transportation / Utilities

- Main Road or Highway
- Gravel or Unimproved Road
- Trail
- Snow Shed (Railway)
- Tunnel
- Bridge
- Airstrip
- Rail Line
- Cable
- Transmission Line
- Pipeline
- Seismic Lines
- Proposed Road
- Deactivated Roads
- Existing Roads

Road Structures

- Bridge
- Cattle Guard
- Culvert
- Gate
- Pipeline Crossing

Hydrography

- Tailing Pond
- Lake, Rivers
- Reservoir
- Wetlands
- River or Stream - Definite
- River or Stream - Dry/Indefinite
- INT, NCD
- S5, S6
- Unknown; UN
- Reach Break
- Fish Barrier

Administrative

- Fort St. John Timber Supply Area (TSA)
- BCTS Mapsheets
- Operating Area Boundaries
- Woodlot Licence Areas
- Private
- First Nations Reserve
- First Nations Consultative Area
- Ecological Reserve, Park, Conservancy, Protected Areas
- Muskwa Kechika Boundary
- JRP Riparian Zone
- Major River Corridor
- Range Tenure
- Ungulate Winter Range
- Wildlife Habitat Area

Contours

- Contour - Index
- Contour - Intermediate

Recreation

- Recreation Site
- Recreation Trail
- Recreation Reserves / Sites

Seral Stage Theming - Future

- <40 Coniferous / Deciduous
- 40-100 Coniferous
- 101-140 Coniferous
- 141+ Coniferous
- 101+ Deciduous
- 40-100 Deciduous

Name: NAD 1983 BC Environment Alberta
 Datum: North American 1983
 Projection: Albers
 Central Meridian: -120.0000
 Latitude of Origin: 60.0000
 Longitude of Origin: 0.0000
 Standard Parallel: 50.0000
 Standard Parallel 2: 58.5000
 Map Units: Meter

Map Date: 5/19/2023 5:01 PM
 Map Produced By: SRECKER
 Map Template Used: