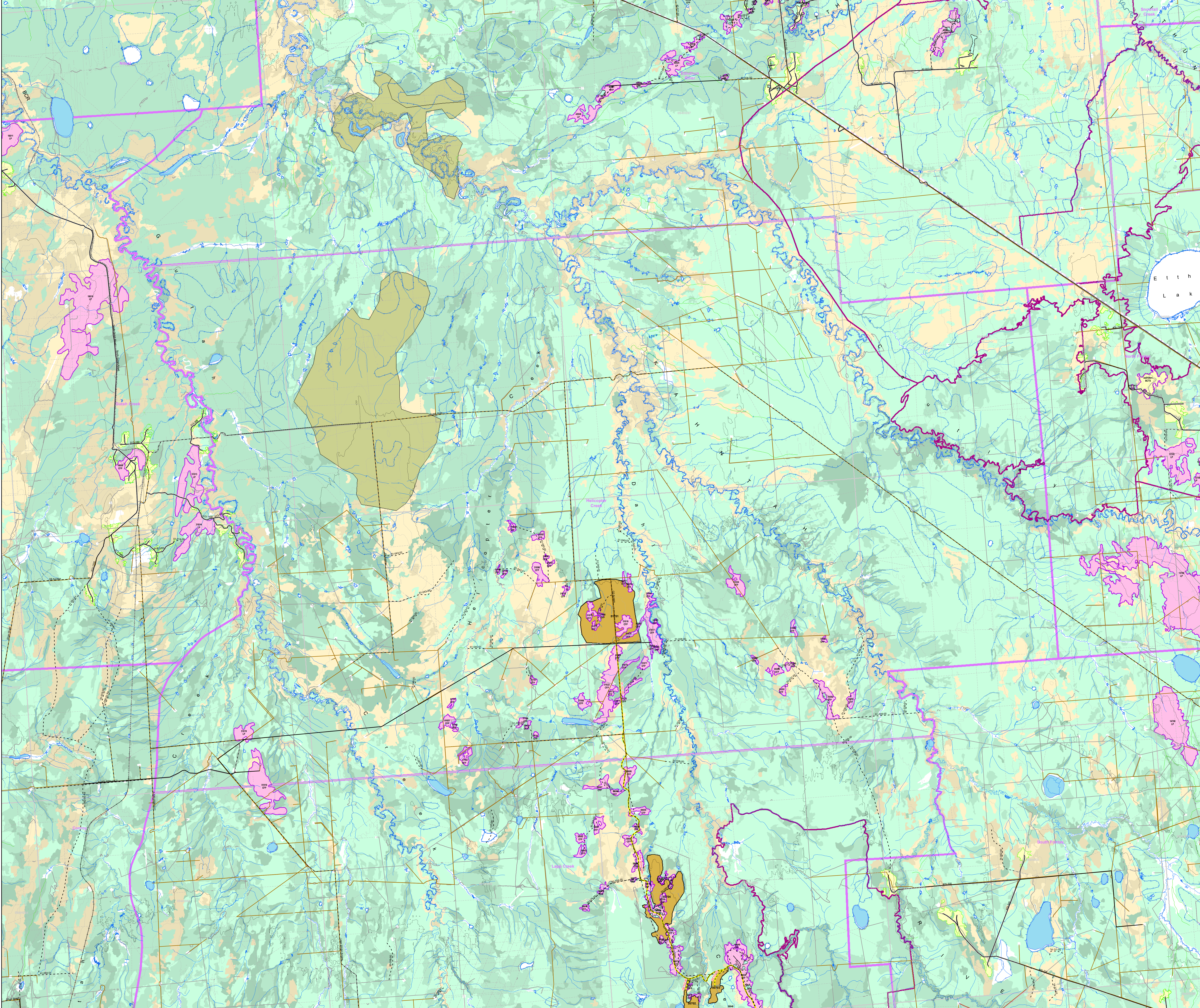
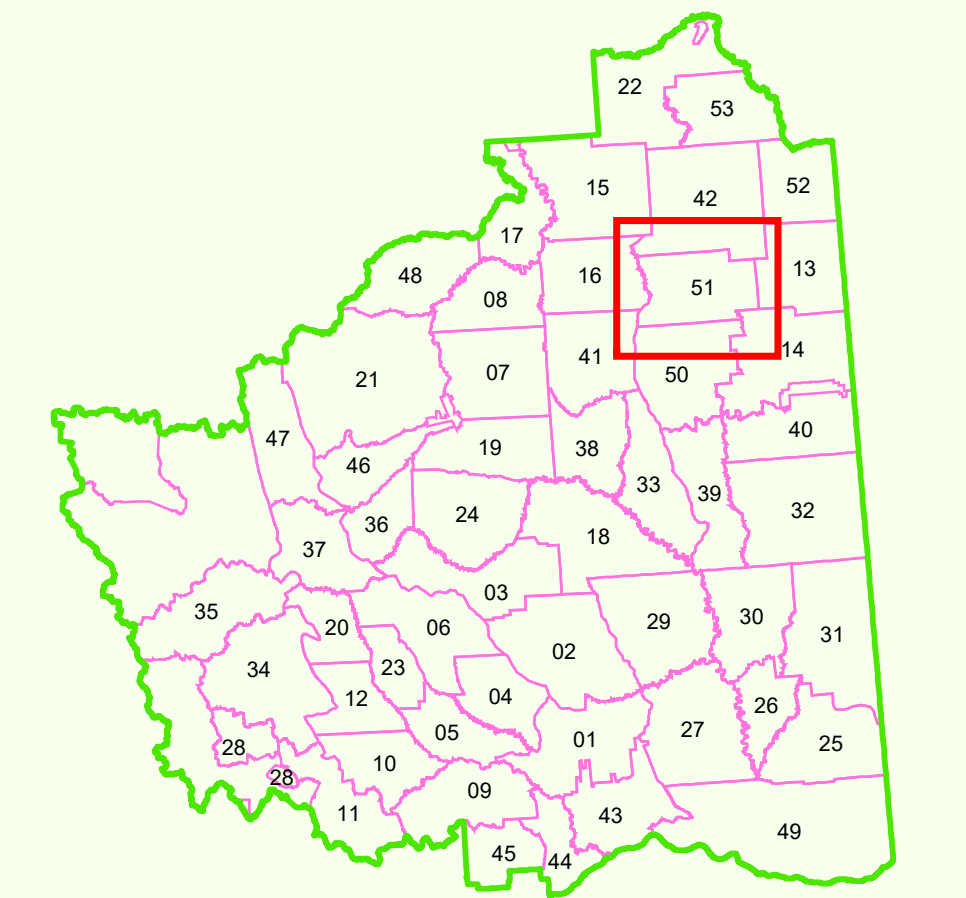


2017 - 2023 CONSOLIDATED FOREST OPERATIONS SCHEDULE
Amendment #418
 Current To: January 02, 2024
FORT ST. JOHN TIMBER SUPPLY AREA
PEACE FOREST DISTRICT

BC Timber Sales
 Cameron River Logistics Inc.
 Canadian Forest Products Ltd.
 Dumire-Za Ventures LP
 Louisiana-Pacific Canada
 Mackenzie Pulp Mill Corporation a Paper Excellence Company
 Peace Valley OSB

Operating Area:
51 - Helicopter Creek



Map Legend

| | |
|--|--|
| <p>Cutblocks</p> <ul style="list-style-type: none"> FOS Planned Authorized Harvested Free Growing Wildlife Tree Patch / Reserve FOS Proposed (Amendment #418) <p>Ownership Codes</p> <ul style="list-style-type: none"> BCG (BCTS (conifer)) BCD (BCTS (deciduous)) BC18 (BCTS (conifer/deciduous)) CC (Canfor (deciduous)) CCP (Canfor (conifer/deciduous)) CR (Cameron River Logging) CC (Cameron River Logging) LP (Louisiana-Pacific Canada) MPC (Mackenzie Pulp Mill Corporation a Paper Excellence Company) PV (Peace Valley OSB) <p>MPMC PA13 Blocks</p> <ul style="list-style-type: none"> Proposed Block Harvested Free Growing <p>Transportation / Utilities</p> <ul style="list-style-type: none"> Highways Existing Roads Proposed Roads Deactivated Roads TRIM II Roads OGC Roads Amendment #418 Roads Pipeline Railway Electricity Transmission Line Seismic Line <p>Road Structures</p> <ul style="list-style-type: none"> Gate Bridge Amendment 418 Bridge Culvert Cattle Guard <p>Hydrography</p> <ul style="list-style-type: none"> Lakes, Rivers Wetlands Definite Stream Indefinite Stream Non-Fish, Query Non-Fish, Inventory Fish, Inventory Riparian Classification Reach Break | <p>Administrative</p> <ul style="list-style-type: none"> Fort St. John Timber Supply Area (TSA) BCGS Mapsheets Operating Area Boundaries Woodlot License Areas Private First Nations Reserve First Nations Claim Area Ecological Reserve, Park, Conservancy, Protected Areas Muskeg Kechika Boundary Original FOS Old Forest Management Area IRP Alpine Zone IRP Riparian Zone Major River Corridor Range Tenure Ungulate Winter Range Wildlife Habitat Area <p>Contours</p> <ul style="list-style-type: none"> Index Contour Intermediate Contour Cliff <p>Recreation</p> <ul style="list-style-type: none"> Recreation Site Recreation Trail Recreation Reserves / Sites <p>Seral Stage Theming</p> <ul style="list-style-type: none"> < 40 Coniferous / Deciduous 40 - 100 Coniferous 101 - 140 Coniferous 141+ Coniferous 40 - 100 Deciduous 101+ Deciduous Water |
|--|--|

0.75 0 0.75 1.5 2.25 3 Kilometers
1:50,000

Projection: Albers
 False Easting: 1000000.000000
 False Northing: 5000000.000000
 Central Meridian: 120.000000
 Standard Parallel 1: 50.000000
 Standard Parallel 2: 50.000000
 Latitude Of Origin: 49.000000
 Linear Unit: Meter
 Datum: North American Datum 1983 (NAD83)
 Digital base map derived from TRIM II
 Contours derived from Digital Elevation Model (DEM)
 Digital datasets maintained and updated by Canfor.

Map Date: 09-January-2024
 Map Produced By: Verbruggen, Kim
 Map Template Used: FOS_Amendment_418_Individual_Operating_Areas_Final_Map