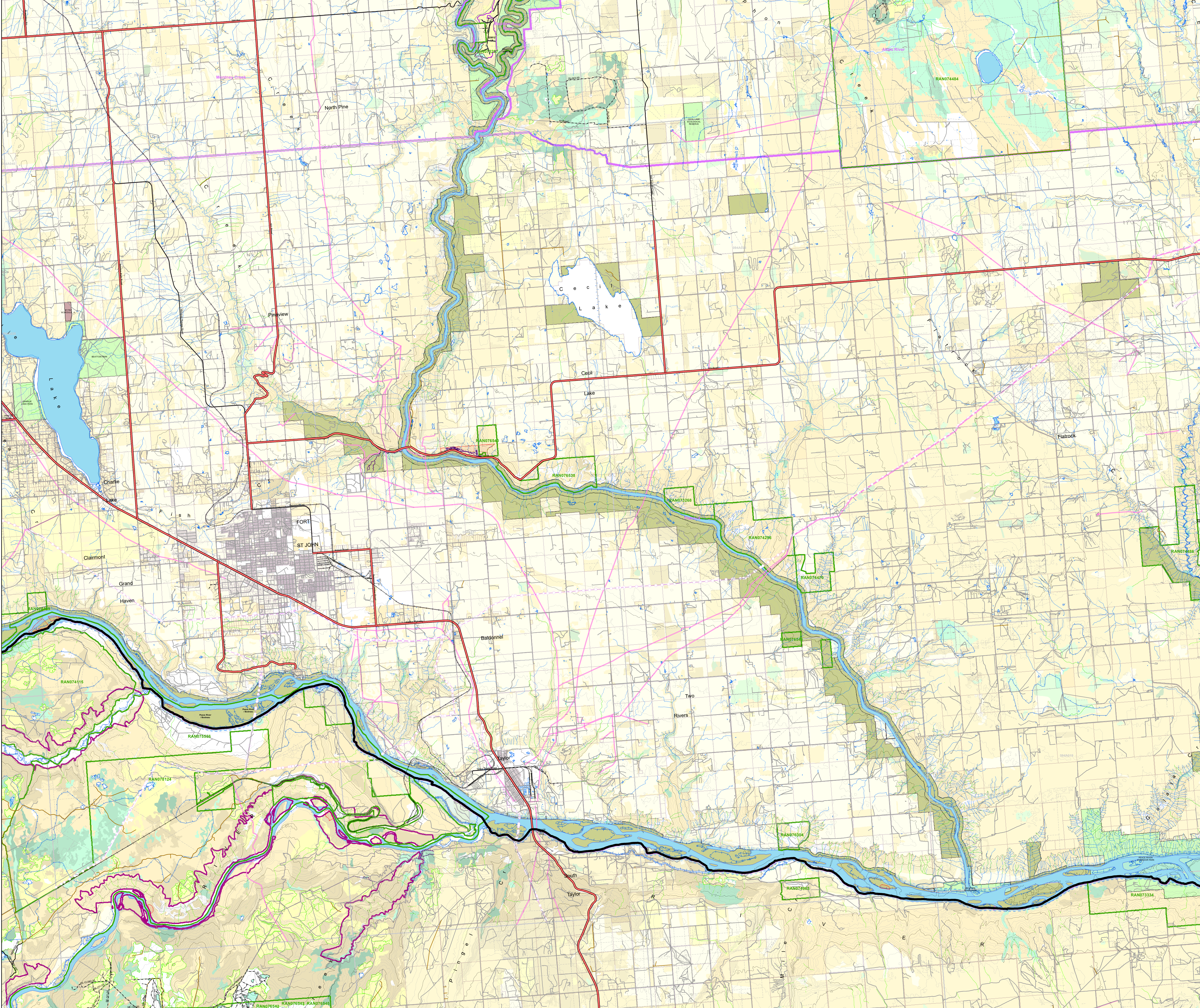
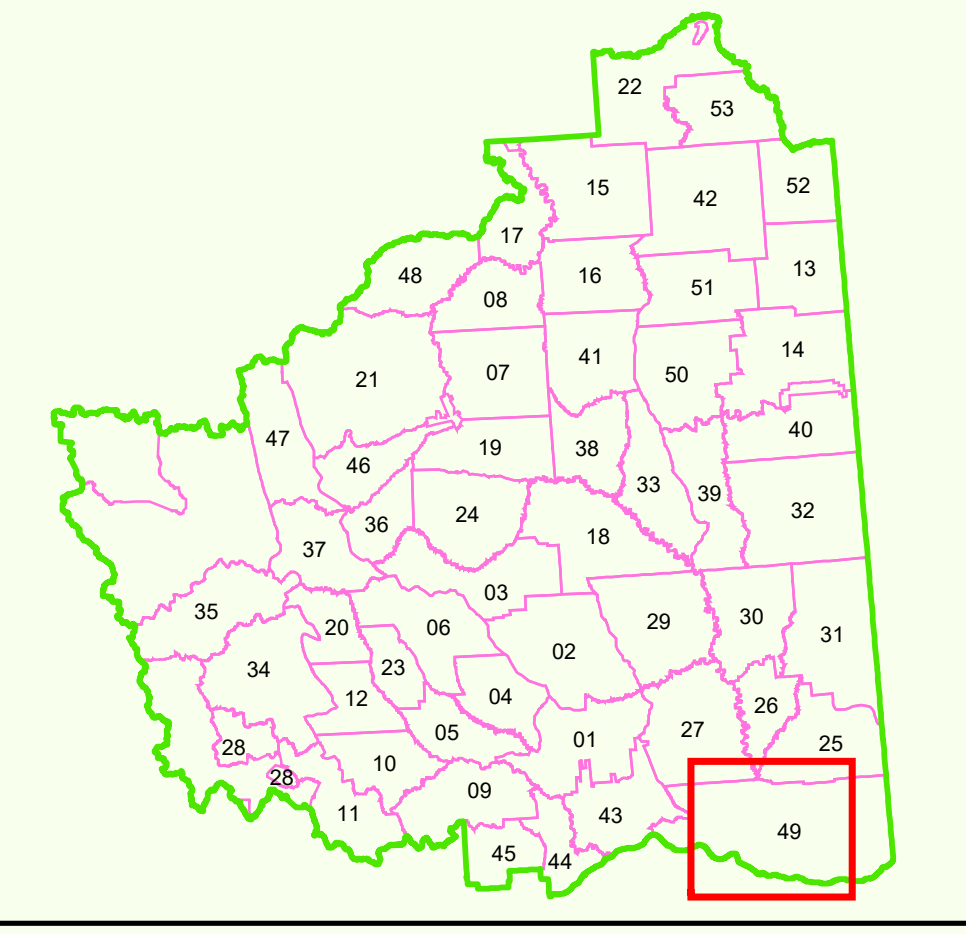


**2017 - 2023 CONSOLIDATED FOREST OPERATIONS SCHEDULE Amendment #418**  
 Current To: January 02, 2024  
**FORT ST. JOHN TIMBER SUPPLY AREA**  
**PEACE FOREST DISTRICT**

BC Timber Sales  
 Cameron River Logistics Inc.  
 Canadian Forest Products Ltd.  
 Dunze-Za Ventures LP  
 Louisiana-Pacific Canada  
 Mackenzie Pulp Mill Corporation a Paper Excellence Company  
 Peace Valley OSB

**Operating Area:**  
**# 49 - Flatrock**



**Map Legend**

|   |   |
|---|---|
| <p><b>Cutblocks</b></p> <ul style="list-style-type: none"> <li>FOS Planned</li> <li>Authorized</li> <li>Harvested</li> <li>Free Growing</li> <li>Wildlife Tree Patch / Reserve</li> <li>FOS Proposed (Amendment #418)</li> </ul> <p><b>Ownership Codes</b></p> <ul style="list-style-type: none"> <li>BCG (BCTS (conifer))</li> <li>BCD (BCTS (deciduous))</li> <li>CC (CFLP (conifer/deciduous))</li> <li>CD (CFLP (deciduous))</li> <li>CCD (CFLP (conifer/deciduous))</li> <li>CFL (CFLP (conifer))</li> <li>CDL (CFLP (deciduous))</li> <li>LP (Louisiana-Pacific Canada)</li> <li>MPC (Mackenzie Pulp Mill Corporation a Paper Excellence Company)</li> <li>PV (Peace Valley OSB)</li> </ul> <p><b>MPMC PA13 Blocks</b></p> <ul style="list-style-type: none"> <li>Proposed Block</li> <li>Harvested</li> <li>Free Growing</li> </ul> <p><b>Transportation / Utilities</b></p> <ul style="list-style-type: none"> <li>Highways</li> <li>Existing Roads</li> <li>Proposed Roads</li> <li>Deactivated Roads</li> <li>TRIM II Roads</li> <li>OGC Roads</li> <li>Amendment #418 Roads</li> <li>Pipeline</li> <li>Railway</li> <li>Electricity</li> <li>Transmission Line</li> <li>Seismic Line</li> </ul> <p><b>Road Structures</b></p> <ul style="list-style-type: none"> <li>Gate</li> <li>Bridge</li> <li>Amendment 418 Bridge</li> <li>Culvert</li> <li>Cattle Guard</li> </ul> <p><b>Hydrography</b></p> <ul style="list-style-type: none"> <li>Lakes, Rivers</li> <li>Wetlands</li> <li>Definite Stream</li> <li>Indefinite Stream</li> <li>Non-Fish, Query</li> <li>Non-Fish, Inventory</li> <li>Fish, Inventory</li> <li>Riparian Classification</li> <li>Reach Break</li> </ul> | <p><b>Administrative</b></p> <ul style="list-style-type: none"> <li>Fort St. John Timber Supply Area (TSA)</li> <li>BCGS Mapsheets</li> <li>Operating Area Boundaries</li> <li>Woodlot License Areas</li> <li>Private</li> <li>First Nations Reserve</li> <li>First Nations Claim Area</li> <li>Ecological Reserve, Park, Conservancy, Protected Areas</li> <li>Muskiwa Kechika Boundary</li> <li>Original FOS Old Forest Management Area</li> <li>IRP Alpine Zone</li> <li>IRP Riparian Zone</li> <li>Major River Corridor</li> <li>Range Tenure</li> <li>Ungulate Winter Range</li> <li>Wildlife Habitat Area</li> </ul> <p><b>Contours</b></p> <ul style="list-style-type: none"> <li>Index Contour</li> <li>Intermediate Contour</li> <li>Cliff</li> </ul> <p><b>Recreation</b></p> <ul style="list-style-type: none"> <li>Recreation Site</li> <li>Recreation Trail</li> <li>Recreation Reserves / Sites</li> </ul> <p><b>Seral Stage Theming</b></p> <ul style="list-style-type: none"> <li>&lt; 40 Coniferous / Deciduous</li> <li>40 - 100 Coniferous</li> <li>101 - 140 Coniferous</li> <li>141+ Coniferous</li> <li>40 - 100 Deciduous</li> <li>101+ Deciduous</li> </ul> <p><b>Water</b></p> <ul style="list-style-type: none"> <li>Water</li> </ul> |
|---|---|

Scale: 0 0.75 1.5 2.25 3 Kilometers  
 1:50,000

Projection: Albers  
 False Easting: 1000000.000000  
 False Northing: 5000000.000000  
 Central Meridian: 115.000000  
 Standard Parallel 1: 50.000000  
 Standard Parallel 2: 50.000000  
 Latitude of Origin: 49.000000  
 Linear Unit: Meter

Source: North American Datum 1983 (NAD83)  
 Digital base map derived from 1983 1:50,000  
 Contours derived from Digital Elevation Model (DEM)  
 Digital elevation maintained and updated by Center.

Map Date: 09-January-2024  
 Map Produced By: Vertiggen, Kim  
 Map Template Used: FOS\_Amendment\_418\_Individual\_Operating\_Areas\_Final\_Map