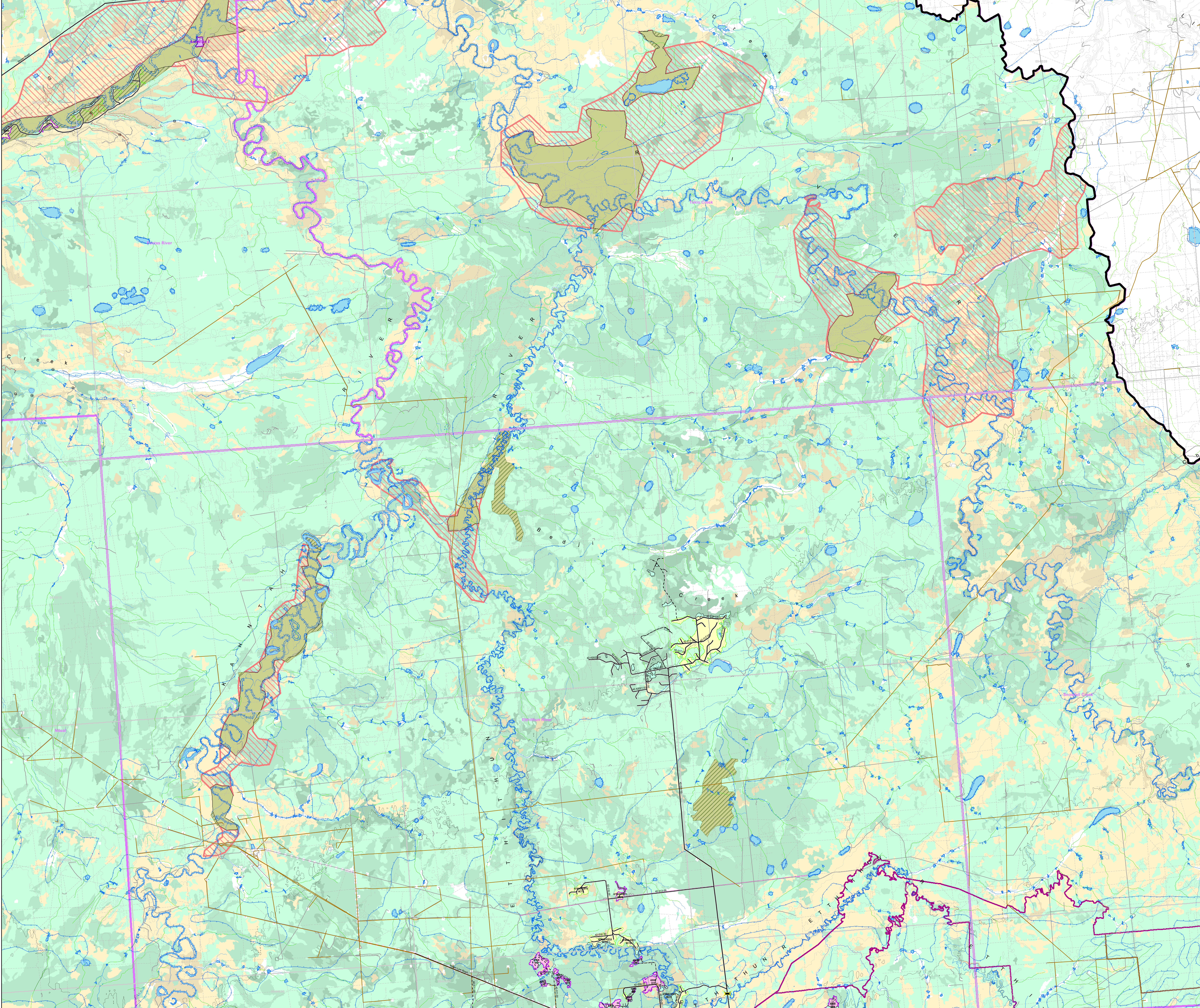
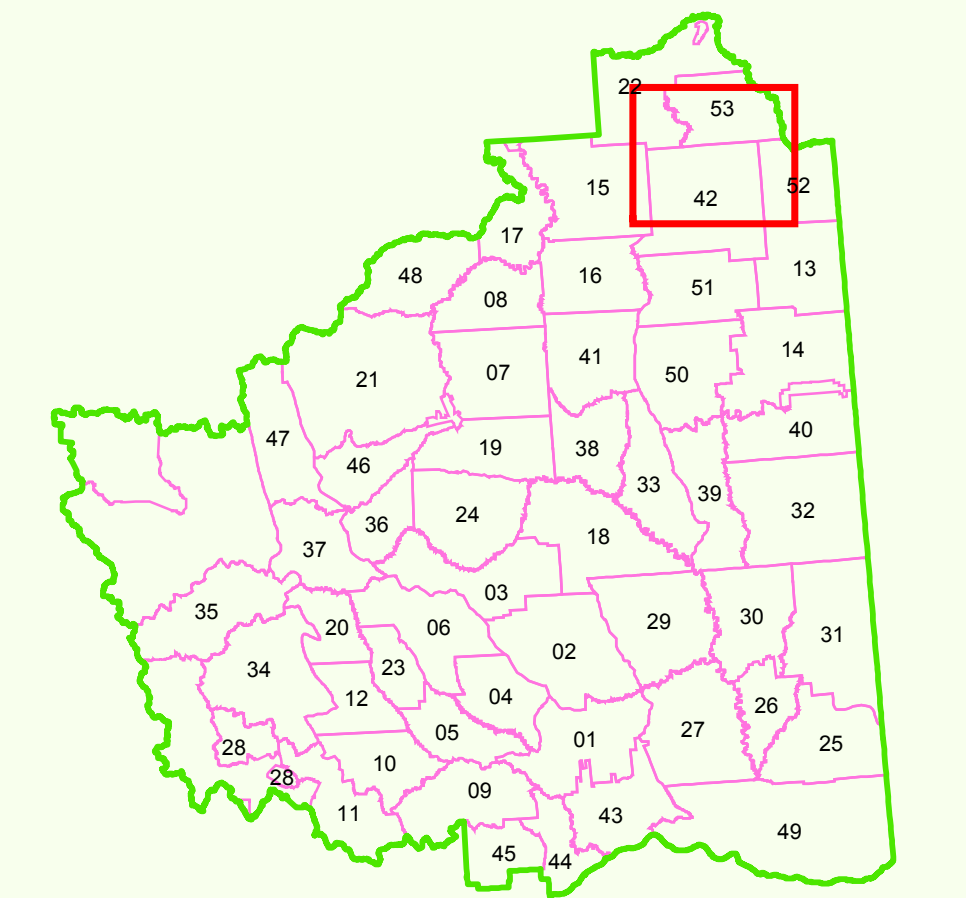


**2017 - 2023 CONSOLIDATED FOREST OPERATIONS SCHEDULE**  
**Amendment #411**  
 Current To: August 17, 2022  
**FORT ST. JOHN TIMBER SUPPLY AREA**  
**PEACE FOREST DISTRICT**

BC Timber Sales  
 Cameron River Logistics Inc.  
 Canadian Forest Products Ltd.  
 Durnee-Za Ventures LP  
 Louisiana-Pacific Canada  
 Mackenzie Pulp Mill Corporation a Paper Excellence Company  
 Peace Valley OSB

**Operating Areas:**  
 Ethithun River / Niteal / Teklo Creek



**Map Legend**

<p><b>Cutblocks</b></p> <ul style="list-style-type: none"> <li> FOS Planned</li> <li> Authorized</li> <li> Harvested</li> <li> Free Growing</li> <li> Wildlife Tree Patch / Reserve</li> <li> FOS Proposed (Amendment #411)</li> <li> FOS Proposed Special Use Permit (SUP)</li> <li> FOS Dropped (Amendment #411)</li> </ul> <p><b>Ownership Codes</b></p> <ul style="list-style-type: none"> <li>BC: BCTS (conifer)</li> <li>BCD: BCTS (deciduous)</li> <li>BCF: BCTS (conifer or deciduous)</li> <li>CC: Canfor (conifer)</li> <li>CD: Canfor (deciduous)</li> <li>CCF: Canfor (conifer or deciduous)</li> <li>CR: Cameron River Logging</li> <li>CL: Durnee-Za Ventures</li> <li>LP: Louisiana-Pacific Canada</li> <li>MPMC: Mackenzie Pulp Mill Corporation a Paper Excellence Company</li> <li>PV: Peace Valley OSB</li> </ul> <p><b>MPMC PA13 Blocks</b></p> <ul style="list-style-type: none"> <li> Proposed Block</li> <li> Harvested</li> <li> Free Growing</li> </ul> <p><b>Transportation / Utilities</b></p> <ul style="list-style-type: none"> <li> Highways</li> <li> Existing Roads</li> <li> Proposed Roads</li> <li> Deactivated Roads</li> <li> TRIM II Roads</li> <li> OGC Roads</li> <li> Amendment #411 Roads</li> <li> Roads</li> <li> Pipeline</li> <li> Railway</li> <li> Electricity</li> <li> Transmission Line</li> <li> Seismic Line</li> </ul> <p><b>Road Structures</b></p> <ul style="list-style-type: none"> <li> Gate</li> <li> Bridge</li> <li> Amendment 411 Bridge</li> <li> Culvert</li> <li> Cattle Guard</li> </ul> <p><b>Hydrography</b></p> <ul style="list-style-type: none"> <li> Lakes, Rivers</li> <li> Wetlands</li> <li> Definite Stream</li> <li> Indefinite Stream</li> <li> Non-Fish, Query</li> <li> Non-Fish, Inventory</li> <li> Fish, Inventory</li> <li> Riparian Classification</li> <li> Reach Break</li> </ul>	<p><b>Administrative</b></p> <ul style="list-style-type: none"> <li> Fort St. John Timber Supply Area (TSA)</li> <li> BCGS Mapsheets</li> <li> Operating Area Boundaries</li> <li> Woodlot License Areas</li> <li> Private</li> <li> First Nations Reserve</li> <li> First Nations Claim Area</li> <li> Ecological Reserve, Park, Protected Areas</li> <li> Muskwa Kechika Boundary</li> <li> Original FOS Old Forest Management Area</li> <li> Planned Additional FOS Old Forest Management Area</li> <li> Planned Removal of FOS Old Forest Management Area</li> <li> IRP Alpine Zone</li> <li> IRP Riparian Zone</li> <li> Major River Corridor</li> <li> Range Tenure</li> <li> Ungulate Winter Range</li> <li> Wildlife Habitat Area</li> </ul> <p><b>Contours</b></p> <ul style="list-style-type: none"> <li> Index Contour</li> <li> Intermediate Contour</li> <li> Cliff</li> </ul> <p><b>Recreation</b></p> <ul style="list-style-type: none"> <li> Recreation Site</li> <li> Recreation Trail</li> <li> Recreation Reserves / Sites</li> </ul> <p><b>Seral Stage Theming</b></p> <ul style="list-style-type: none"> <li> &lt; 40 Coniferous / Deciduous</li> <li> 40 - 100 Coniferous</li> <li> 101 - 140 Coniferous</li> <li> 141+ Coniferous</li> <li> 40 - 100 Deciduous</li> <li> 101+ Deciduous</li> <li> Water</li> </ul>
---	---

0 0.75 1.5 2.25 3 Kilometers  
**1:50,000**

Projection: Albers  
 False Easting: 1000000.000000  
 False Northing: 0.000000  
 Standard Parallel: 50.000000  
 Standard Parallel: 50.000000  
 Latitude Of Origin: 49.000000  
 Central Meridian: 120.000000  
 Datum: North American Datum 1983 (NAD83)  
 Digital base data derived from TRIM II Contours derived from Digital Elevation Model (DEM) Digital datasets maintained and updated by Canfor.

Map Date: 17-August-2022  
 Map Produced By: Verburggen, Kim  
 Map Template Used: FOS\_Amendment\_411\_Combined\_Operating\_Area\_Final\_Map