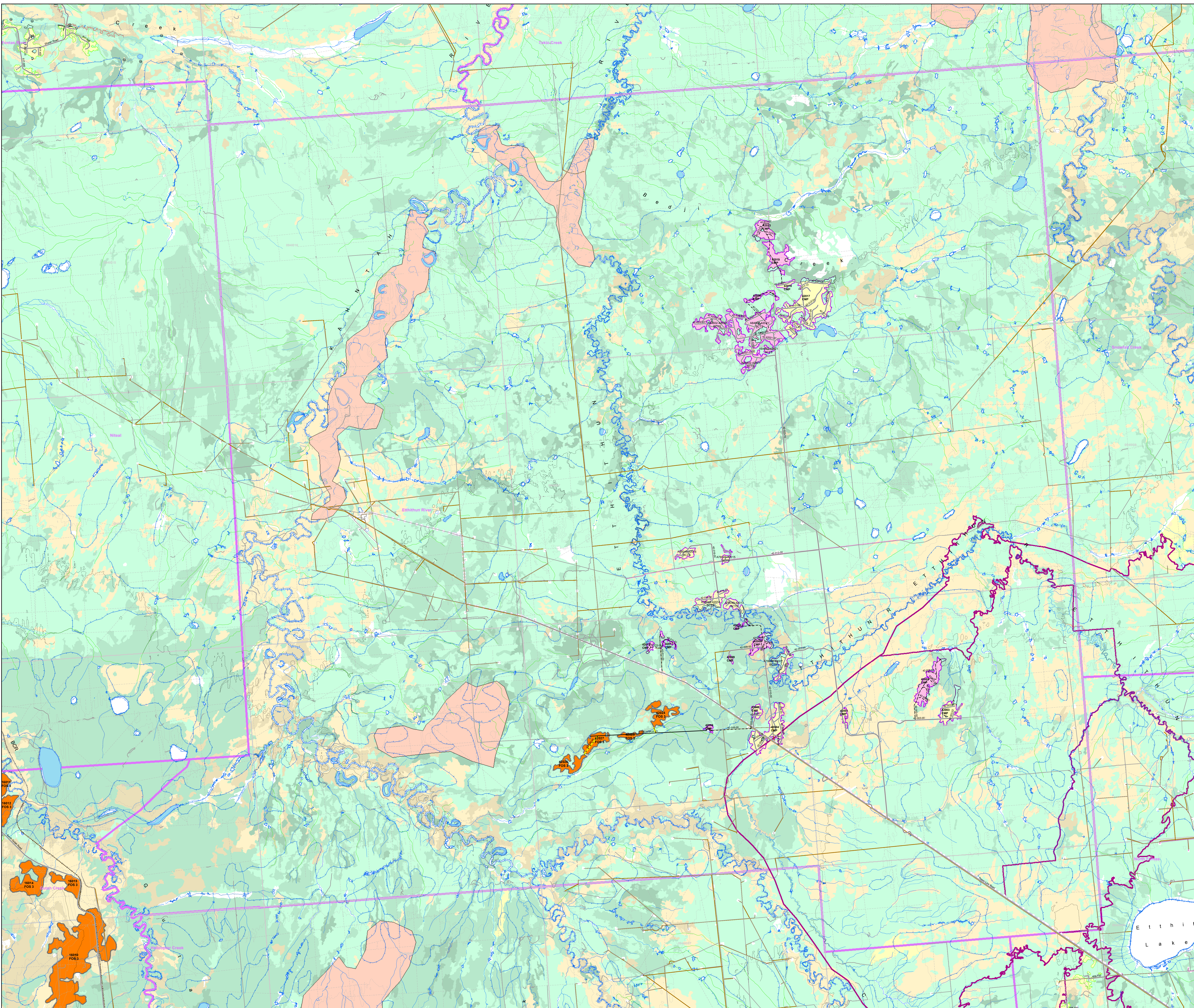
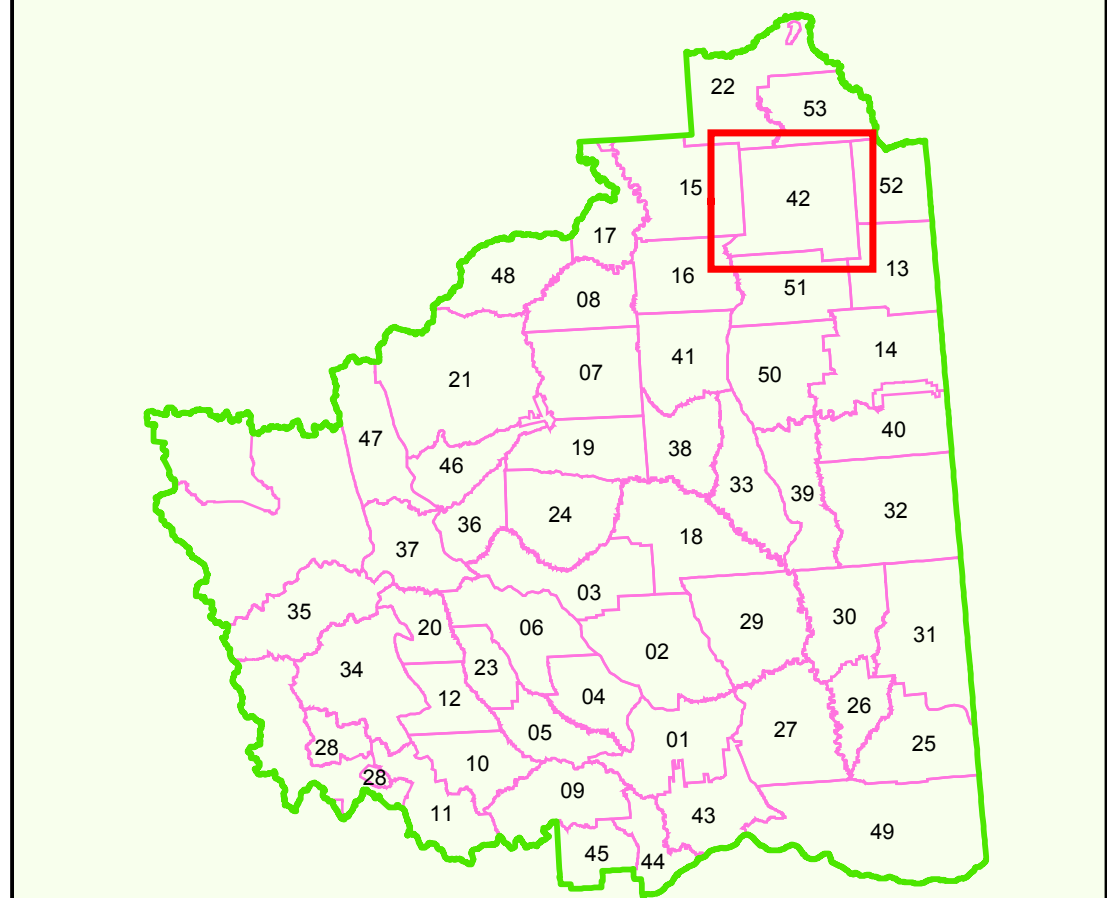


**2017 - 2023 CONSOLIDATED FOREST OPERATIONS SCHEDULE**  
 Current To: April 7, 2017  
**FORT ST. JOHN TIMBER SUPPLY AREA**  
**PEACE FOREST DISTRICT**

BC Timber Sales  
 Cameron River Logistics Inc.  
 Canadian Forest Products Ltd.  
 Chetwynd Mechanical Pulp  
 Dunne-Za Ventures LP  
 Louisiana-Pacific Canada  
 Peace Valley OSB

**Operating Area:**  
**# 42 - Etthithun River**



**Map Legend**

<p><b>Cutblocks</b></p> <ul style="list-style-type: none"> <li>FOS Proposed (2017)</li> <li>FOS Proposed (Carryover)</li> <li>Authorized</li> <li>Harvested</li> <li>Free Growing</li> <li>Wildlife Tree Patch / Reserve</li> </ul> <p><b>Ownership Codes</b></p> <ul style="list-style-type: none"> <li>BCS (conifer)</li> <li>BCS (deciduous)</li> <li>CC (conifer or deciduous)</li> <li>CC (conifer)</li> <li>CC (deciduous)</li> <li>CCP (conifer)</li> <li>CCP (deciduous)</li> <li>CCP (conifer or deciduous)</li> <li>LP (Louisiana-Pacific Canada)</li> <li>OSB (Peace Valley OSB)</li> </ul> <p><b>Tembec PA13 Blocks</b></p> <ul style="list-style-type: none"> <li>Proposed Block</li> <li>Harvested</li> <li>Free Growing</li> </ul> <p><b>Transportation / Utilities</b></p> <ul style="list-style-type: none"> <li>Highways</li> <li>Existing Roads</li> <li>Proposed Roads</li> <li>FOS Proposed Roads (2017)</li> <li>Deactivated Roads</li> <li>TRM II Roads / Digital Road Atlas</li> <li>OCC Roads</li> <li>Pipeline</li> <li>Railway</li> <li>Electricity Transmission Line</li> <li>Seismic Line</li> </ul> <p><b>Road Structures</b></p> <ul style="list-style-type: none"> <li>Gate</li> <li>Bridge</li> <li>Cattle Guard</li> </ul> <p><b>Hydrography</b></p> <ul style="list-style-type: none"> <li>Lakes, Rivers</li> <li>Wetlands</li> <li>Definite Stream</li> <li>Indefinite Stream</li> <li>Non-Fish, Query</li> <li>Non-Fish, Inventory</li> <li>Fish, Inventory</li> <li>Riparian Classification</li> </ul>	<p><b>Administrative</b></p> <ul style="list-style-type: none"> <li>BCGS Mapsheets</li> <li>Operating Area Boundaries</li> <li>Woodlot License Areas</li> <li>Private</li> <li>First Nations Reserve</li> <li>First Nations Claim Area</li> <li>Ecological Reserve, Park, Protected Areas</li> <li>Muskwa Kechika Boundary</li> <li>FOS Old Forest Management Area</li> <li>IRP Alpine Zone</li> <li>IRP Riparian Zone</li> <li>Major River Corridors</li> <li>Range Tenures</li> <li>Ungulate Winter Range</li> <li>Wildlife Habitat Area</li> <li>Scenic Areas</li> </ul> <p><b>Visual Quality Objective Codes:</b></p> <ul style="list-style-type: none"> <li>P Preservation</li> <li>R Retention</li> <li>PR Partial Retention</li> <li>M Modification</li> <li>MM Maximum Modification</li> </ul> <p><b>Contours</b></p> <ul style="list-style-type: none"> <li>Index Contour</li> <li>Intermediate Contour</li> <li>Cutff</li> </ul> <p><b>Recreation</b></p> <ul style="list-style-type: none"> <li>Recreation Site</li> <li>Recreation Trail</li> <li>Recreation Reserves / Sites</li> </ul> <p><b>Seral Stage Theming</b></p> <ul style="list-style-type: none"> <li>&lt; 40 Coniferous / Deciduous</li> <li>40 - 100 Coniferous</li> <li>101 - 140 Coniferous</li> <li>141+ Coniferous</li> <li>40 - 100 Deciduous</li> <li>101+ Deciduous</li> <li>Water</li> </ul>
--	--

0 0.75 1.5 2.25 3 Kilometers  
**1:50,000**

Projection: Albers  
 False Easting: 1000000.000000  
 False Northing: 5000000.000000  
 Central Meridian: 120.000000  
 Standard Parallel 1: 50.000000  
 Standard Parallel 2: 50.000000  
 Latitude Of Origin: 49.000000  
 Units: Meter

Datum: North American Datum 1983 (NAD83)  
 Digital base map derived from TM25.0  
 Contours derived from Digital Elevation Model (DEM)  
 Digital datasets maintained and updated by Center.

Map date: 07-April-2017  
 Map produced by: Verburggen, Kim  
 Map template used: FOS\_Map\_Template.mxd