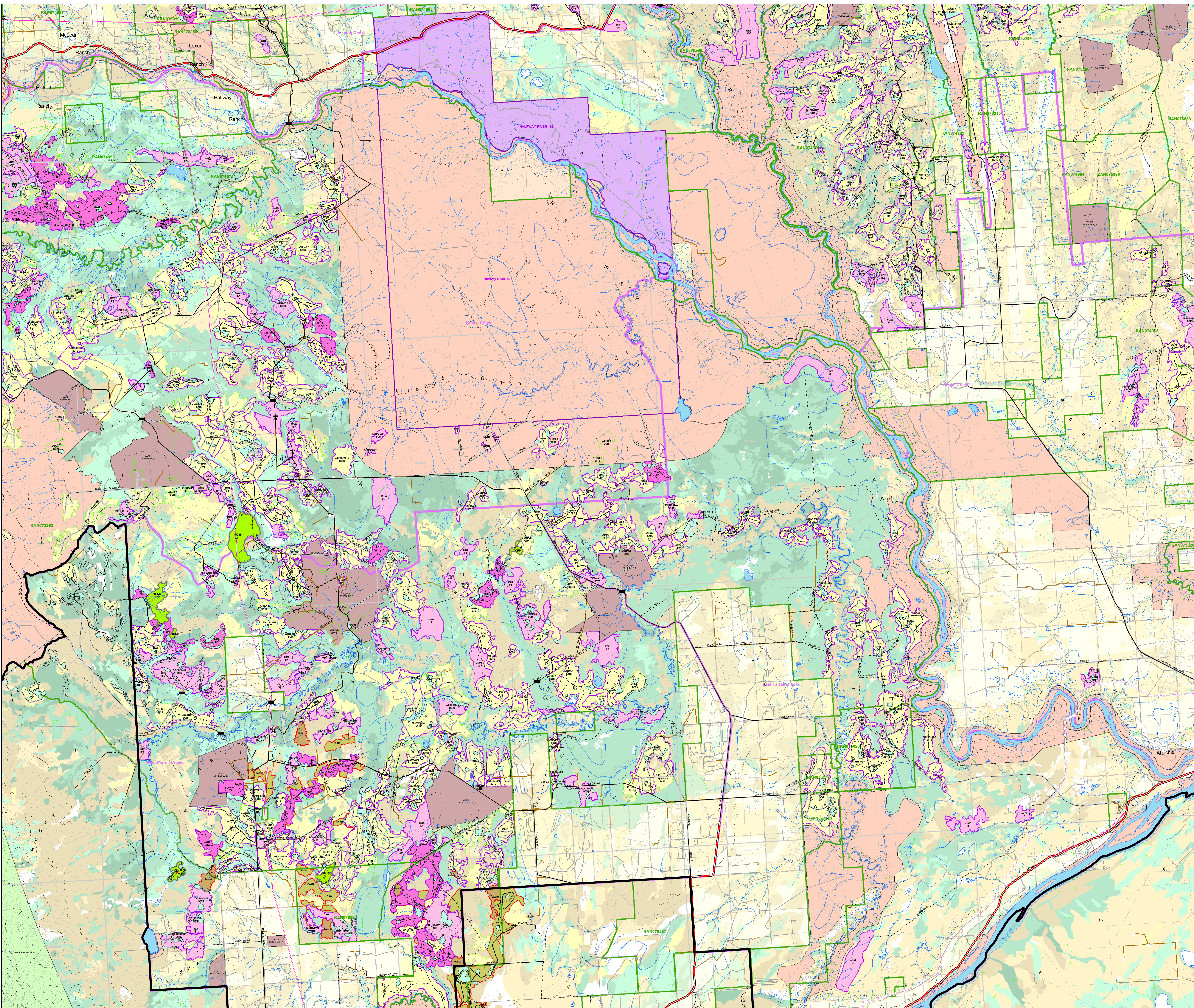
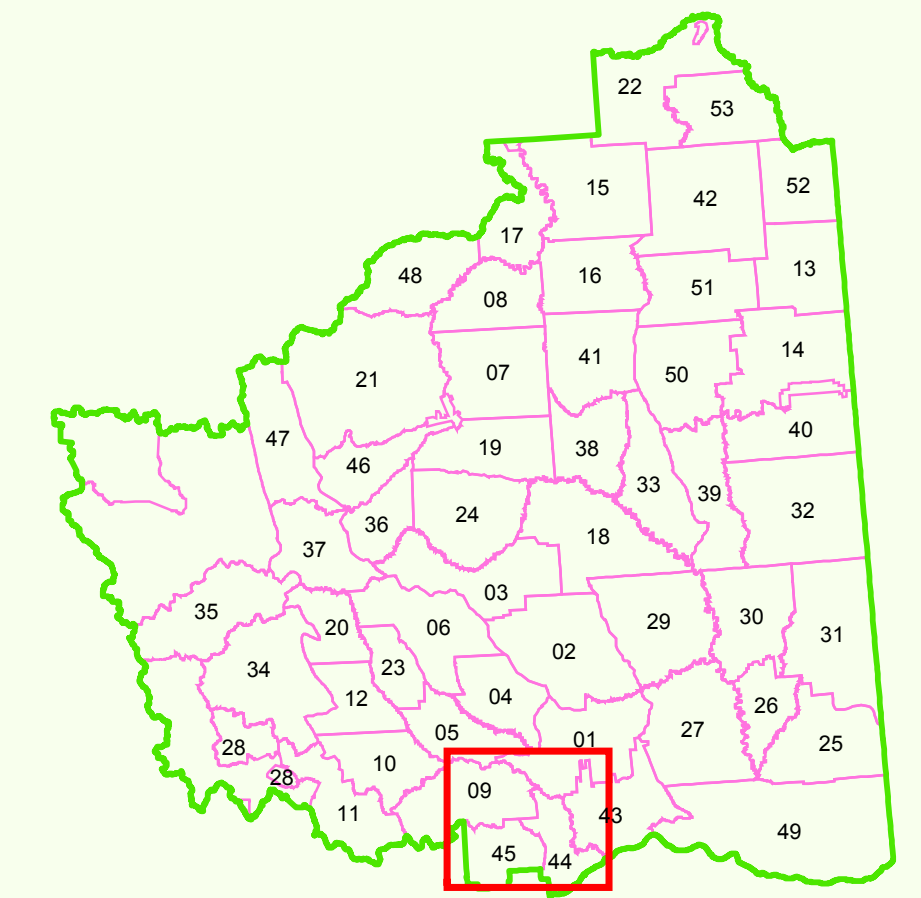


2017 - 2023 CONSOLIDATED  
FOREST OPERATIONS SCHEDULE  
Amendment #399  
Current To: August 25, 2020  
FORT ST. JOHN TIMBER SUPPLY AREA  
PEACE FOREST DISTRICT

BC Timber Sales  
Cameron River Logistics Inc.  
Canadian Forest Products Ltd.  
Dumree-Za Ventures LP  
Louisiana-Pacific Canada  
Mackenzie Pulp Mill Corporation a Paper Excellence Company  
Peace Valley OSB

**Operating Areas:**  
Kobes Creek / West Farrell Creek



**Map Legend**

<p><b>Cutblocks</b></p> <ul style="list-style-type: none"> <li>FOS Planned</li> <li>Authorized</li> <li>Harvested</li> <li>Partial Cutting</li> <li>Free Growing</li> <li>Wildlife Tree Patch / Reserve</li> <li>FOS Proposed (Amendment #399)</li> <li>FOS Dropped (Amendment #399)</li> </ul> <p><b>Ownership Codes</b></p> <ul style="list-style-type: none"> <li>BCs: BCTS (conifer)</li> <li>BCd: BCTS (deciduous)</li> <li>BCS: BCTS (conifer or deciduous)</li> <li>CC: Canfor (conifer)</li> <li>CCd: Canfor (deciduous)</li> <li>CCS: Canfor (conifer or deciduous)</li> <li>CR: Cameron River Logging</li> <li>DC: Dumree-Za Ventures</li> <li>LP: Louisiana-Pacific Canada</li> <li>MPC: Mackenzie Pulp Mill Corporation</li> <li>PV: a Paper Excellence Company</li> </ul> <p><b>Tembec PA13 Blocks</b></p> <ul style="list-style-type: none"> <li>Proposed Block</li> <li>Harvested</li> <li>Free Growing</li> </ul> <p><b>Transportation / Utilities</b></p> <ul style="list-style-type: none"> <li>Highways</li> <li>Existing Roads</li> <li>Proposed Roads</li> <li>Proposed Roads</li> <li>Deactivated Roads</li> <li>TRIM II Roads</li> <li>OGC Roads</li> <li>Amendment #399</li> <li>Pipeline</li> <li>Railway</li> <li>Electricity</li> <li>Transmission Line</li> <li>Seismic Line</li> </ul> <p><b>Road Structures</b></p> <ul style="list-style-type: none"> <li>Gate</li> <li>Bridge</li> <li>Culvert</li> <li>Cattle Guard</li> </ul> <p><b>Hydrography</b></p> <ul style="list-style-type: none"> <li>Lakes, Rivers</li> <li>Wetlands</li> <li>Definite Stream</li> <li>Indefinite Stream</li> <li>Non-Fish, Query</li> <li>Non-Fish, Inventory</li> <li>Fish, Inventory</li> <li>Riparian Classification</li> <li>Reach Break</li> </ul>	<p><b>Administrative</b></p> <ul style="list-style-type: none"> <li>Fort St. John Timber Supply Area (TSA)</li> <li>BCGS Mapsheets</li> <li>Operating Area Boundaries</li> <li>Woodlot License Areas</li> <li>Private</li> <li>First Nations Reserve</li> <li>First Nations Claim Area</li> <li>Ecological Reserve, Park, Protected Areas</li> <li>Muska Kechika Boundary</li> <li>FOS Old Forest Management Area</li> <li>IRP Alpine Zone</li> <li>IRP Riparian Zone</li> <li>Major River Corridor</li> <li>Range Tenure</li> <li>Ungulate Winter Range</li> <li>Wildlife Habitat Area</li> </ul> <p><b>Contours</b></p> <ul style="list-style-type: none"> <li>Index Contour</li> <li>Intermediate Contour</li> <li>Cliff</li> </ul> <p><b>Recreation</b></p> <ul style="list-style-type: none"> <li>Recreation Site</li> <li>Recreation Trail</li> <li>Recreation Reserves / Sites</li> </ul> <p><b>Seral Stage Theming</b></p> <ul style="list-style-type: none"> <li>&lt; 40 Coniferous / Deciduous</li> <li>40 - 100 Coniferous</li> <li>101 - 140 Coniferous</li> <li>141+ Coniferous</li> <li>40 - 100 Deciduous</li> <li>101+ Deciduous</li> <li>Water</li> </ul>
--	--

Scale: 1:50,000

Map Date: 25-August-2020  
Map Produced By: Verbruggen, Kim  
Map Template Used: FOS\_Amendment\_399\_Combined\_Operating\_Areas\_Draft\_Map.mxd